

STUDIO COMPLEX TV1



Complex TV1

- Dimensions - 1500 sq.m.
- Studios - 2
- Production Rooms - 2
- Editing Rooms - 3
- Power - UPS, Power generator

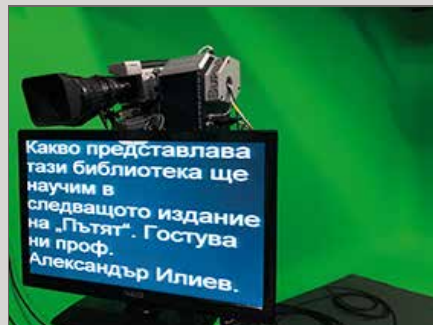
STUDIO 1

Video

- Camera capacity** Up to 5 Sony cameras
- Motion System** Motorized Dolly, Pantograph ABC, up to 7m
- TV Prompter** 2 x prompter monitors (controlled from TV room)
- Tripods** 4 x Master pedestals
- Lighting** Cine LED Panels, Fresnels controlled by DMX
- Video Monitoring** 2 x 42" LED monitors

Audio

- In air system** up to 4 head sets
- Microphones** 4 x Lavalier mic Senheiser, 4 x Gun mic
- Intercom** 5 x Headset 24 channels RTS
- Audio Monitoring** 2 x Audio monitor box JBL
- Green Box** 8x6x4m Virtual/ Augmented System
- Air-condition** Cooling and heating system



The configuration is basic and can be expanded



Broadcast company

STUDIO COMPLEX TV1



STUDIO 2

Video

Camera capacity	Up to 5 Sony cameras
Motion System	Motorized Dolly, Pantograph ABC, up to 7m
TV Prompter	2 x prompter monitors (controlled from TV room)
Tripodes	4 x Master pedestals
Lighting	Cine LED Panels controlled by DMX
Screen	LED Wall 1,2pp – 8 m2
Video Monitoring	42" LED monitor

Audio

In air system	up to 4 head sets
Microphones	4 x Lavalier mic Senhiser, 2 x Gun mic
Intercom	4 x Headset 24 channels RTS
Audio Monitoring	2 x Audio monitor box JBL

Air-condition	Cooling and heating system
----------------------	----------------------------



The configuration is basic and can be expanded



Broadcast company

STUDIO COMPLEX TV1



Production room 1

VIDEO

Vision Mixer

4K/HD Atem 2, 2M/E, 20 inputs, 6 AUX, 8 Key, DVE effects, 20 channel multiviewer

Matrix

40 x 40 Router with smart controls

Graphics

HD title generator

TV Prompter

Autoscript controller

Playouts

2 channels playout system - file based

Monitors

3 x HD Sony LED 50, 1 x HD Panasonic 46",
3 x 24" LED Monitors; 1 x 19" TFT monitors

Engineering

Camera control

SONY RCP 7430

Vision control

Waveform, vectoroscope

Audio

Sound mixer

Digital Audio Console 40 channels Beringer Full Loaded

Audio Monitoring

Audio Monitors Yamaha; Audio Monitors Sony;
Audio signal scope;

Intercom

24 channels RTS

Others

2 x Telephone hibrid (conection with the studio),
2 x telephone lines, ISDN codec AEQ,



The configuration is basic and can be expanded

STUDIO COMPLEX TV1



Production room 2

VIDEO

Vision Mixer

4K/HD Atem 2, 2M/E, 20 inputs, 6 AUX, 8 Key, DVE effects, 20 channel multiviewer

Matrix

40 x 40 Router with smart controls

Graphics

HD title generator

TV Prompter

Autoscript controller

Playouts

2 channels playout system - file based

Monitors

3 x HD Sony LED 50", 3 x 24" LED Monitors;
1 x 19" TFT monitors

Engineering

Camera control

SONY RCP 7430

Vision control

Waveform, vectoroscope

Audio

Sound mixer

Digital Audio Console 40 channels Beringer Full Loaded

Audio Monitoring

Audio Monitors Yamaha; Audio Monitors Sony;
Audio signal scope;

Intercom

24 channels RTS

Others

2 x Telephone hibrid (connection with the studio),
2 x telephone lines, ISDN codec AEQ,

The configuration is basic and can be expanded

STUDIO COMPLEX TV1



SERVER and COMUNICATION ROOM

ASSET MANAGMENT

Storage 100 Tb (expandable) HDD, (24 channels expandable), news room system, postproduction system

Playouts 2 x 2 HD channels RA System

Graphics 2 x Character generators RA System

VIDEO

Matrix 40 x 40 Router with smart controls

Vision Mixer 2 x 4K/HD Atem 2, 2M/E, 20 inputs, 6 AUX, 8 Key, DVE effects, 20 channel multiviewer main frame

Recorders 2 x HD Ingest 2 channels RA System, 2 x SSD

Monitors 2x HD LED Monitors

OTHERS

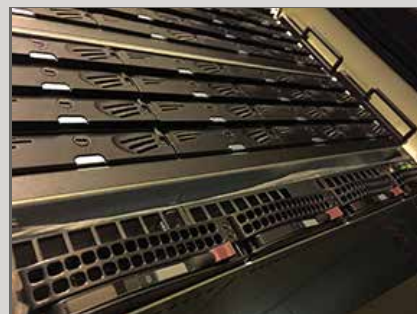
Intercom 2 x 24 channels RTS main frame

Reception 2 x motorised antenna 2.40m. 15W ÷ 60E

Transmission Complete DSNG operation

Fibre conection Complete conection with local and interational rings

High-speed Internet access



The configuration is basic and can be expanded

STUDIO COMPLEX TV1

EDITING ROOMS



DRESSING & MAKEUP



The configuration is basic and can be expanded